

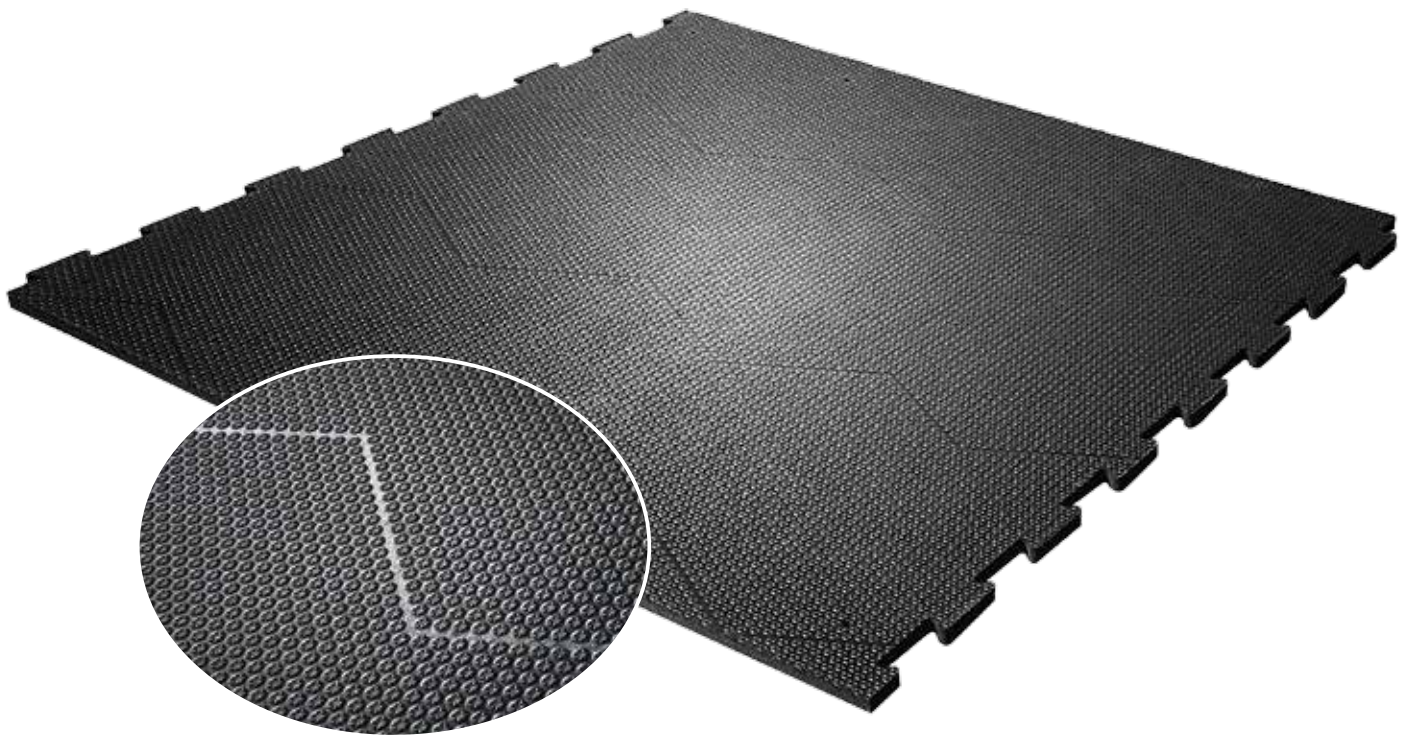
NEW

KRAIBURG profiKURA

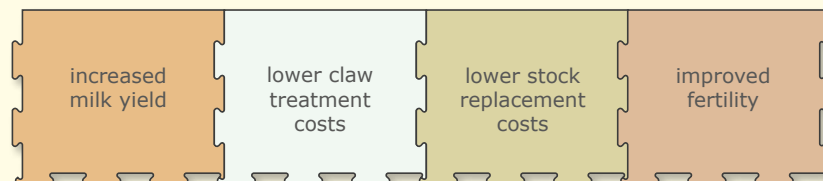
The professional „all-in-one-rubber mat“ in cattle houses for:

softness ▪ grip ▪ claw abrasion

on paved / concrete walking and milking areas

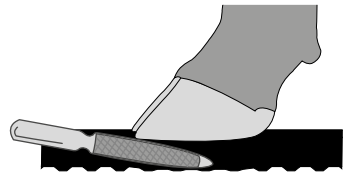


The investment in animal-friendly walking areas pays off!

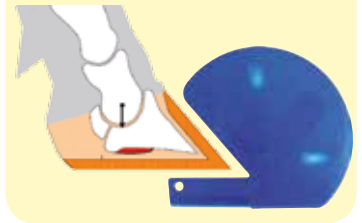


The KRAIBURG profiKURA mat

- ▶ the „all-in-one-mat“: ideal softness, improved slip resistance and even claw abrasion throughout the cattle house
- optiGrip-surface with incorporated abrasive corundum and star-shaped profiling
 - ▶ high slip resistance
 - ▶ contributes to correct claw form through even abrasion in all areas of the cattle house
- improved walking comfort
 - ▶ supports claw health and mobility
 - ▶ promotes feed intake and high yield
- permanently stable in position and form
- puzzle compensates for natural thermal expansion, practically a seamless floor area
- simple and fast installation
 - ▶ easy-to-handle single mats
 - ▶ prefabricated fixing points ease installation
- suitable for new construction as well as for renovation
- manure removal with scraper and driving on mats possible*



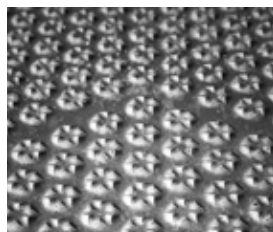
ideal claw form



Check the claws with the KRAIBURG pediKURA® Tester!
(Available at your local dealer or directly at KRAIBURG.)

About corundum:

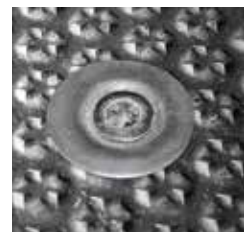
- ▶ the **second hardest mineral** after diamonds
- ▶ does not react with acids and bases: best precondition for use in slurry environments
- ▶ patented technology which has been well-proven in the KRAIBURG-group for many years



optiGrip-surface



stud profile for ideal softness



KRAIBURG fastening system:
extremely sturdy and rounded off



Notice:

- ▶ the **full benefits** from using this product (slip resistance + optimal claw abrasion) are realised with **full coverage in all areas of the cattle house** (the amount + distribution of the abrasive agent is designed for full coverage)

profiKURA maintains the claw form, but claw trimming is still necessary!

- ▶ Claws must still be trimmed regularly, but only for the purpose of claw care and less for position correction or complex treatment. We recommend **functional claw trimming 4 to 6 weeks before profiKURA is installed.**
- Important:** do not install profiKURA at the same time you trim claws, because the claw has to become accustomed to the abrasion.

Scraper manure removal*

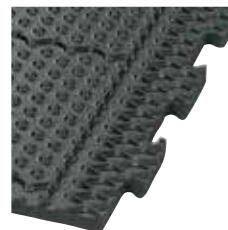
In principal we recommend the use of **scrapers specifically developed for rubber floors. For structural alterations** it is necessary to adapt the **scraper facilities in coordination with the scraper manufacturer**, according to the **KRAIBURG guidelines for manure scrapers.**
Important: check any adaptations annually!

Driving over*

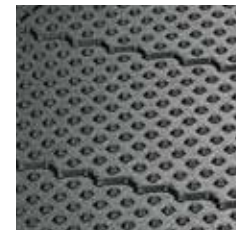
profiKURA can be driven over with vehicles with authorized tyres at the **recommended inflation pressure up to max. 4 bar.**

profIKURA P ▶ for paved / concrete areas, with stationary scraper or mobile manure removal

- available for every walking alley width, custom-fit in 2 cm increments
- the puzzle section parallel to the scraper is especially reinforced, so that the scraper can slide safely across it
- dirt barriers reduce soiling underneath the mats



reinforced puzzle-shaped edges



dirt barriers

Dimensions:

lower side profile: studs (5 mm)	thickness: 24 mm	width: in 2 cm increments from 96 cm to 500 cm (starting at a width of 220 cm, mats are puzzled together)	length: 125 cm
---	-------------------------	--	-----------------------



profIKURA Flex / Form ▶ for areas like milking parlours, collecting yards, travel lanes, crossing passages, ... without scraper or mobile manure removal

- helps to reduce noise and stress
- can be installed between milking times
- faster milking through improved parlour entrance and exit

a) profIKURA Flex ▶ the flexible one

- available with puzzle shaped edges on 2, 3 or 4 sides
- through the versatile dimensions and combination possibilities, the most unusually shaped areas can be covered; the mats might only have to be cut to shape on the edges of the surface

Dimensions:

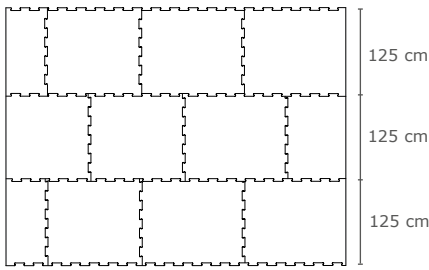
lower side profile: studs (5 mm)	thickness: 24 mm
---	-------------------------

2 sides with puzzle shaped edges:	length: 125 cm	x	width: 87.5/92/96/100/104.5/109/113/117/121.5/126/130/134/138.5/143/147/151/155.5/160/164 cm (puzzle seam on wide sides)
3 sides with puzzle shaped edges:	length: 125 cm	x	width: 82/99/116/133/150/167 cm (puzzle seam on wide sides and on one long side)
4 sides with puzzle shaped edges:	length: 125 cm	x	width: 170 cm

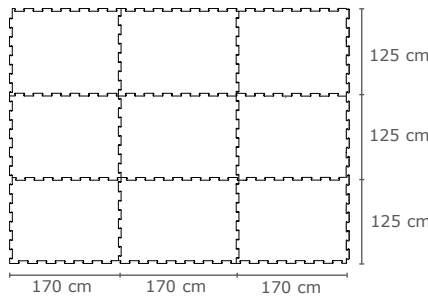


* Please take notice of the corresponding KRAIBURG specifications. You will obtain these at your local KRAIBURG dealer or at www.kraiburg-elastik.com.

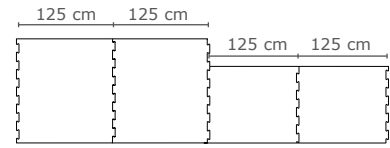
Covering example profiKURA Flex:



3 sides / 4 sides puzzle



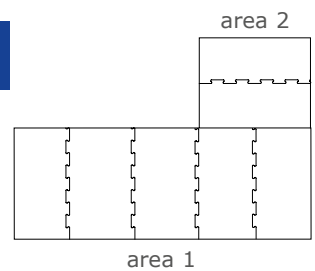
4 sides puzzle



2 sides puzzle

b) profiKURA Form ▶ the tailor-made one

- dimensionally accurate projected solutions for surfaces with one or more adjoining rectangular areas
- exactly fitting mats with an easily understandable installation plan
→ easy installation – practically no cutting work – no cut-off



(for technical reasons the adjoining areas do not have puzzle-shaped sides as standard)

profiKURA-options for special areas: with **solar radiation** or **flushing manure removal**: see leaflet „Special areas with KURA / profiKURA“



Installation – easy and fast

The guidelines to correct installation can be found in the installation instructions!
You will obtain these at your local KRAIBURG dealer or at www.kraiburg-elastik.com.

KRAIBURG manufacturer guarantee

profiKURA: 5 years

More detailed information is available on request.

Tolerances

thickness: +3/-2 mm **length + width:** each +/- 1.5 % (DIN ISO 3302-1 tolerance class M4)

The tolerances also apply within the mat and when installed.



Questions?
We look forward to hearing from you!
You can call us at: +49/8683/701-303
(We speak English, German and Russian)

The products presented here should only be used for the mentioned applications. Technical specifications are subject to alterations. All sales are subject to our General Terms and Conditions. Legal basis is the German version of the document.

Your KRAIBURG dealer:



English

06/2014

www.kraiburg-elastik.com



Gummiwerk KRAIBURG Elastik GmbH & Co. KG

Göllstraße 8 • 84529 Tittmoning • GERMANY

Tel: +49/86 83/701-303 • Fax: +49/86 83/701-190 • e-mail: info@kraiburg-elastik.de
www.kraiburg-elastik.com